

Marteloskop : Spegnas Nord



10 0 10 20



Meter

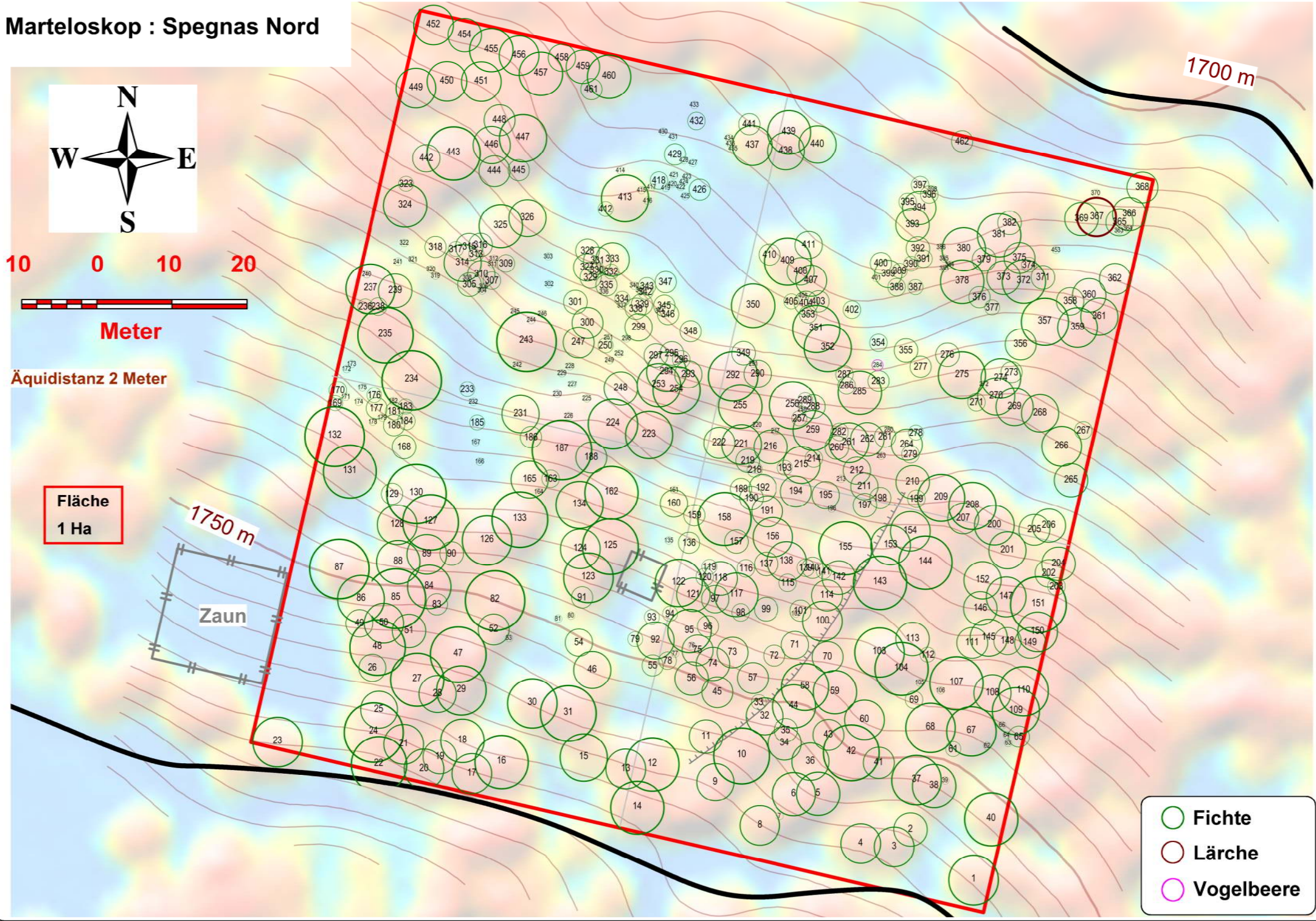
Äquidistanz 2 Meter

Fläche
1 Ha

1750 m

Zaun

1700 m



- Fichte
- Lärche
- Vogelbeere

Bestehender Bestand (Juli 2013)

Fläche : 1.0 ha

Baumartenmischung

| Baumart | Stk./ha | G/ha [m ²] | sv/ha [sv] |
|------------------|------------|---------------------------|---------------|
| Fichte | 460 | 54.45 | 553.30 |
| Lärche | 1 | 0.19 | 2.10 |
| Vogelbeere | 1 | 0.00 | 0.00 |
| Total | 462 | 54.64 | 555.40 |
| Darunter Totholz | 0 | 0.00 | 0 (=0%) |

Verteilung der BHD-Klassen

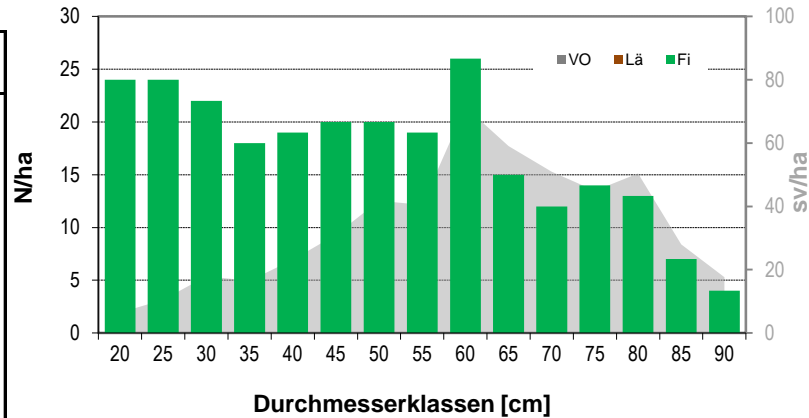
| BHD Klassen | Stk./ha | G/ha [m ²] | sv/ha [sv] |
|----------------|---------|---------------------------|---------------|
| Schwachholz | 233 | 6.96 | 51.40 |
| Mittleres-Holz | 139 | 19.88 | 207.83 |
| Starkholz | 90 | 27.81 | 296.17 |

Schwachholz: bis 32 cm

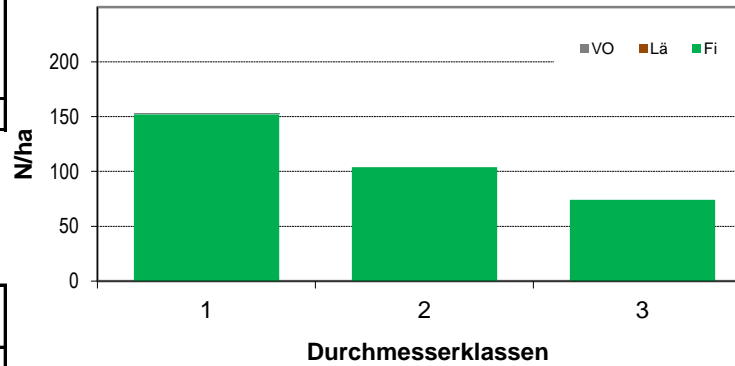
Mittleres-Holz: bis 52 cm

Starkholz: ab 52 cm

Stammzahlen- und Volumenverteilung pro BHD-Klasse

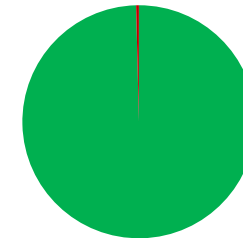


Anzahl Bäume pro Baumart und BHD-Klasse



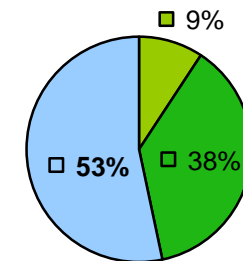
Nadelholz [%Vol.] : **100%**
 Laubholz [%Vol.] : **0%**
 Volumen des Mittelstammes : **1.20 sv**

Baumartenmischung [% Vol]



■ Fi (100%) ■ Lä (0%) ■ VO (0%)

Verteilung der BHD-Klassen [sv]



■ Schwachholz ■ Mittleres-Holz
 □ Starkholz